

Hawai'i Statewide Conservation Planning - O'ahu Greenprint

Protect Agricultural Lands

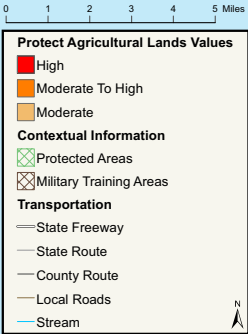
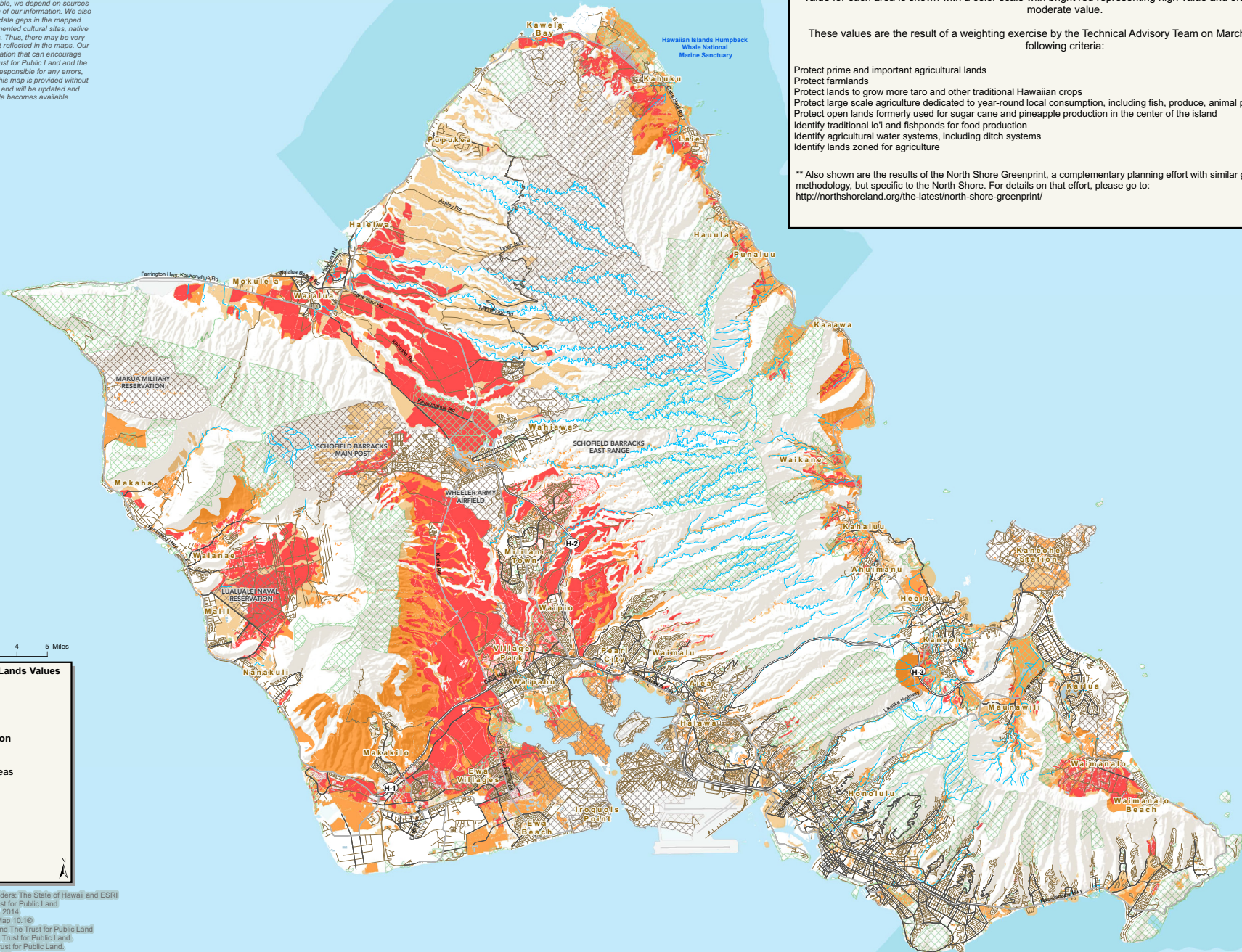
While The Trust for Public Land and the Office of Hawaiian Affairs strive to provide the best data available, we depend on sources outside of our organizations for much of our information. We also acknowledge that there are likely data gaps in the mapped conservation values due to undocumented cultural sites, native natural habitat and other resources. Thus, there may be very special and significant places not yet reflected in the maps. Our maps are meant to provide information that can encourage various conservation efforts. The Trust for Public Land and the Office of Hawaiian Affairs are not responsible for any errors, omissions, or positional accuracy. This map is provided without warranties, expressed or implied, and will be updated and corrected over time as new data becomes available.

This map displays the results of the Protect Agricultural Lands Values goal for the O'ahu Greenprint**. The degree of value for each area is shown with a color scale with bright red representing high value and orange representing moderate value.

These values are the result of a weighting exercise by the Technical Advisory Team on March 11, 2014 on the following criteria:

Protect prime and important agricultural lands	18%
Protect farmlands	15%
Protect lands to grow more taro and other traditional Hawaiian crops	14%
Protect large scale agriculture dedicated to year-round local consumption, including fish, produce, animal products	13%
Protect open lands formerly used for sugar cane and pineapple production in the center of the island	13%
Identify traditional lo'i and fishponds for food production	10%
Identify agricultural water systems, including ditch systems	10%
Identify lands zoned for agriculture	9%

** Also shown are the results of the North Shore Greenprint, a complementary planning effort with similar goals and methodology, but specific to the North Shore. For details on that effort, please go to: <http://northshoreland.org/the-latest/north-shore-greenprint/>



Special thanks to the following data providers: The State of Hawaii and ESRI
Map created by the Trust for Public Land
on July 24, 2014.
Created in ArcMap 10.1
TPL, The Trust for Public Land, and The Trust for Public Land
logo are trademarks of The Trust for Public Land.
Copyright © 2014 The Trust for Public Land.
www.tpl.org
Information on this map is provided for purposes of
discussion and visualization only.

Hawaiian Islands Humpback
Whale National
Marine Sanctuary

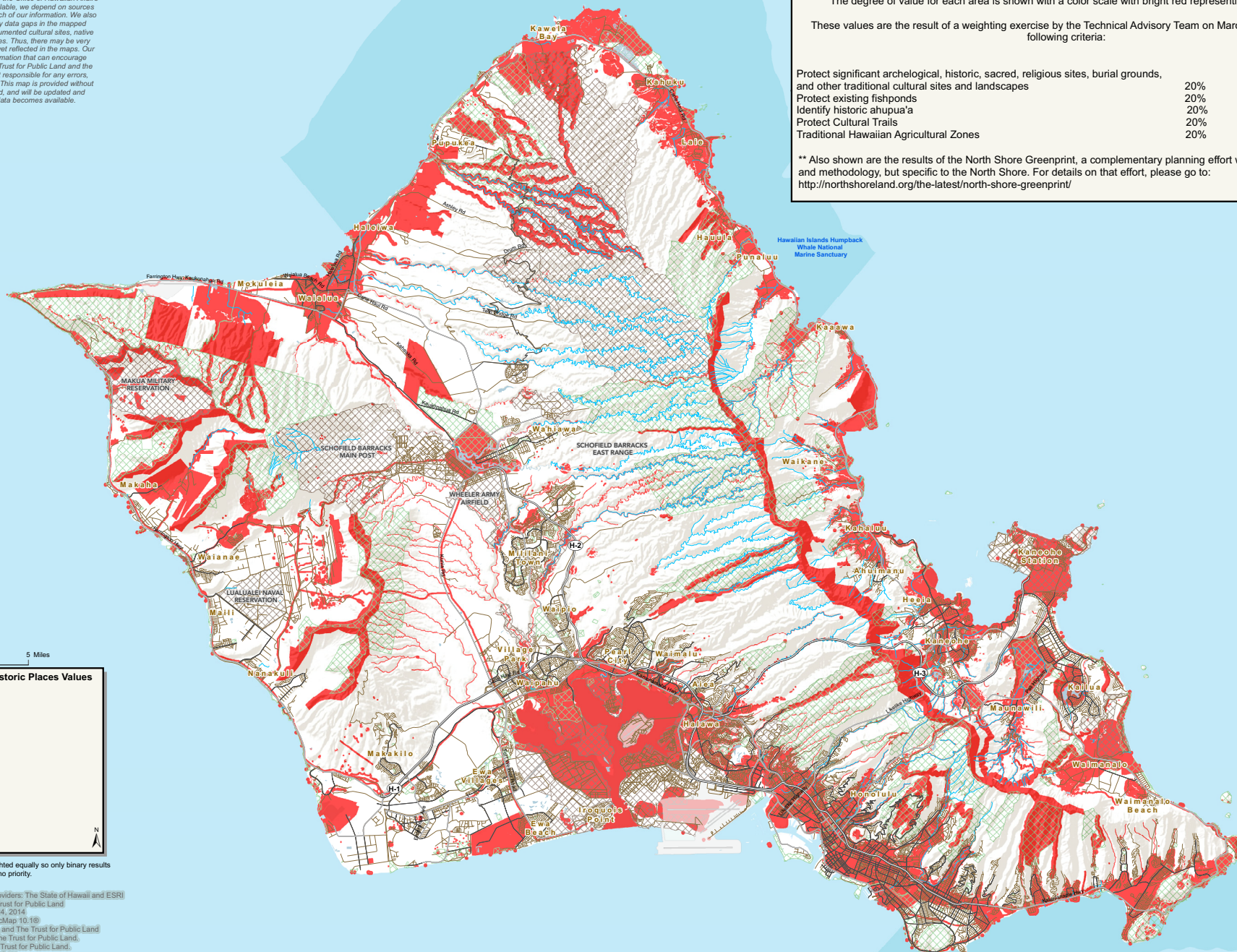
While The Trust for Public Land and the Office of Hawaiian Affairs strive to provide the best data available, we depend on sources outside of our organizations for much of our information. We acknowledge that there are likely data gaps in the mapped conservation values due to undocumented cultural sites, native natural habitat and other resources. Thus, there may be very special and significant places not yet reflected in the maps. Our maps are meant to provide information that can encourage various conservation efforts. The Trust for Public Land and the Office of Hawaiian Affairs are not responsible for any errors, omissions, or omissions of any kind. The data is provided without warranties, expressed or implied, and will be updated and corrected over time as new data becomes available.

This map displays the results of the Preserve Cultural and Historic Places Values goal for the O'ahu Greenprint**. The degree of value for each area is shown with a color scale with bright red representing high value.

These values are the result of a weighting exercise by the Technical Advisory Team on March 11, 2014 on the following criteria:

Protect significant archeological, historic, sacred, religious sites, burial grounds, and other traditional cultural sites and landscapes	20%
Protect existing fishponds	20%
Identify historic ahupua'a	20%
Protect Cultural Trails	20%
Traditional Hawaiian Agricultural Zones	20%

**** Also shown are the results of the North Shore Greenprint, a complementary planning effort with similar goals and methodology, but specific to the North Shore. For details on that effort, please go to:**
<http://northshoreland.org/the-latest/north-shore-greenprint/>



0 1 2 3 4 5 Miles

Preserve Cultural and Historic Places Values

■ High*

Contextual Information

 Protected Areas Military Training Areas

Transportation

—State Freeway

—State Route

—County Route

— Local P

— Stream

* For Oahu Greenprint all criteria weighted equally so only binary results were created showing high priority or no priority.

Special thanks to the following data providers: The State of Hawaii and ESRI
Map created by the Trust for Public Land
on July 24, 2014

Created in ArcMap 10.1©
TPL, The Trust for Public Land, and The Trust for Public Land
logo are trademarks of The Trust for Public Land,
Copyright © 2014 The Trust for Public Land.

Information on this map is provided for purposes of discussion and visualization only.

Hawaiian Islands Humpback
Whale National
Marine Sanctuary

Source: Ertl, USGS, NOAA.

Hawai'i Statewide Conservation Planning - O'ahu Greenprint

Protect Coastal Regions

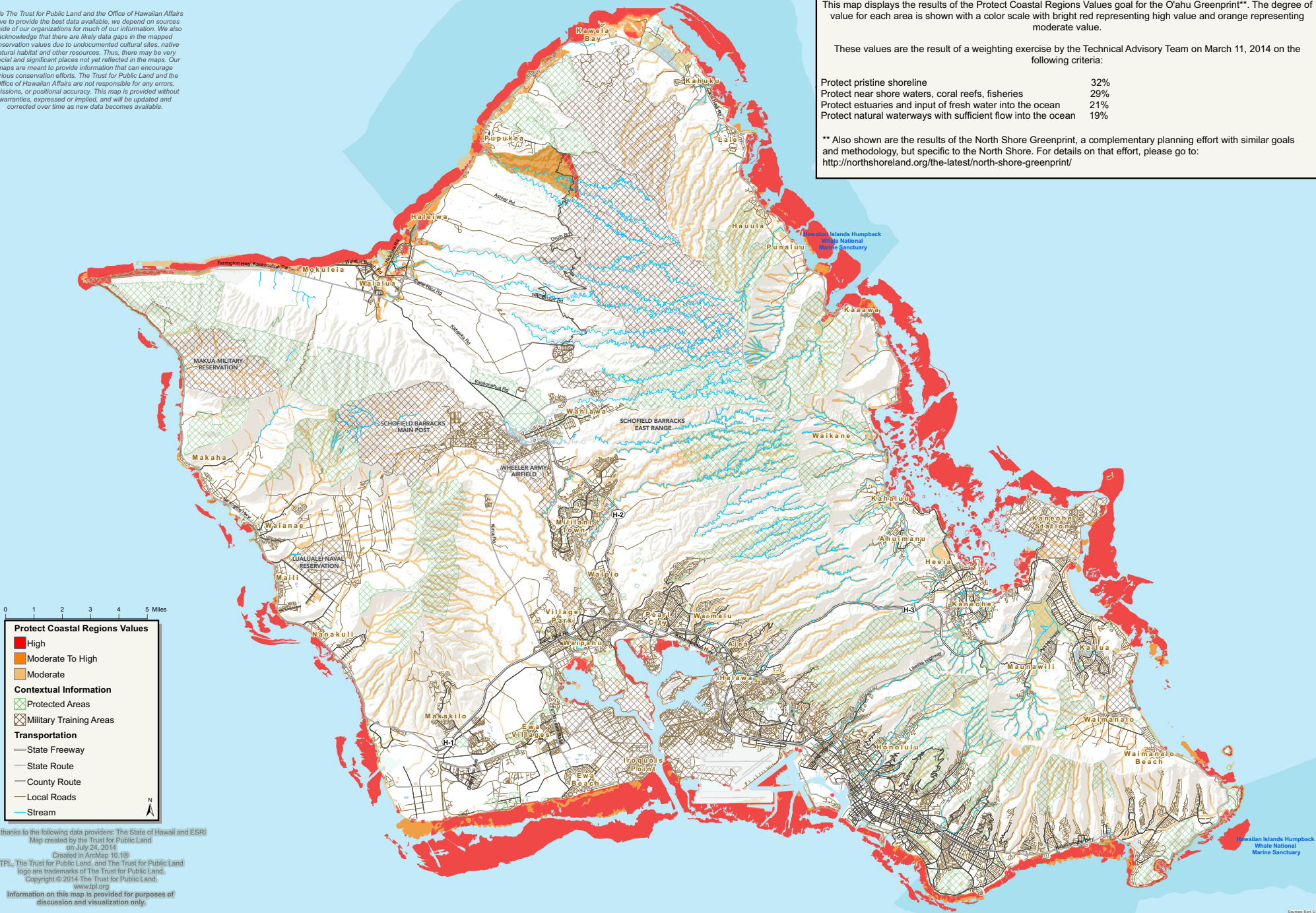
While The Trust for Public Land and the Office of Hawaiian Affairs strive to provide the best data available, we depend on sources outside of our organizations for much of our information. We also acknowledge that there are likely data gaps in the mapped conservation values due to undocumented cultural sites, native natural habitat and other resources. Thus, there may be very special and significant places not yet reflected in the maps. Our maps are meant to provide information that can encourage various conservation efforts. The Trust for Public Land and the Office of Hawaiian Affairs are not responsible for any errors, omissions, or positional accuracy. This map is provided without warranties, expressed or implied, and will be updated and corrected over time as new data becomes available.

This map displays the results of the Protect Coastal Regions Values goal for the O'ahu Greenprint**. The degree of value for each area is shown with a color scale with bright red representing high value and orange representing moderate value.

These values are the result of a weighting exercise by the Technical Advisory Team on March 11, 2014 on the following criteria:

Protect pristine shoreline	32%
Protect near shore waters, coral reefs, fisheries	29%
Protect estuaries and input of fresh water into the ocean	21%
Protect natural waterways with sufficient flow into the ocean	19%

** Also shown are the results of the North Shore Greenprint, a complementary planning effort with similar goals and methodology, but specific to the North Shore. For details on that effort, please go to: <http://northshoreland.org/the-latest/north-shore-greenprint/>



Hawai'i Statewide Conservation Planning - O'ahu Greenprint

Protect Natural Habitats

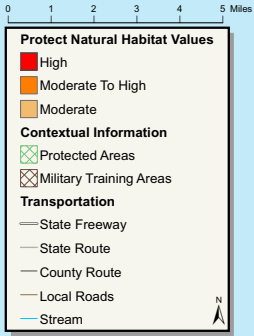
While The Trust for Public Land and the Office of Hawaiian Affairs strive to provide the best data available, we depend on sources outside of our organizations for much of our information. We also acknowledge that there are likely data gaps in the mapped conservation values due to undocumented cultural sites, native natural habitat and other resources. Thus, there may be very special and significant places not yet reflected in the maps. Our maps are meant to provide information that can encourage various conservation efforts. The Trust for Public Land and the Office of Hawaiian Affairs are not responsible for any errors, omissions, or positional accuracy. This map is provided without warranties, expressed or implied, and will be updated and corrected over time as new data becomes available.

This map displays the results of the Protect Natural Habitat Values goal for the O'ahu Greenprint.** The degree of value for each area is shown with a color scale with bright red representing high value and orange representing moderate value.

These values are the result of a weighting exercise by the Technical Advisory Team on March 11, 2014 on the following criteria:

Protect native forests	11%
Protect native and natural habitat	10%
Protect vegetation along streams	10%
Protect endangered and rare native species habitat (areas where they could increase)	9%
Protect spawning habitat	9%
Protect and restore wetlands	9%
Protect native animal populations	8%
Protect ridges and mountaintops	7%
Protect unfragmented areas and protect intact ahupua'a systems	7%
Provide wild and natural green areas	7%
Identify and protect endangered species areas for migration because of climate change	7%
Protect karst system	6%

** Also shown are the results of the North Shore Greenprint, a complementary planning effort with similar goals and methodology, but specific to the North Shore. For details on that effort, please go to: <http://northshoreland.org/the-latest/north-shore-greenprint/>



Special thanks to the following data providers: The State of Hawaii and ESRI
Map created by the Trust for Public Land
on July 24, 2014.
Created in ArcMap 10.1SP
TPL, The Trust for Public Land, and The Trust for Public Land
logo are trademarks of The Trust for Public Land.
Copyright © 2014 The Trust for Public Land.
www.tpl.org
Information on this map is provided for purposes of
discussion and visualization only.

Hawai'i Statewide Conservation Planning - O'ahu Greenprint

Overall Conservation Values

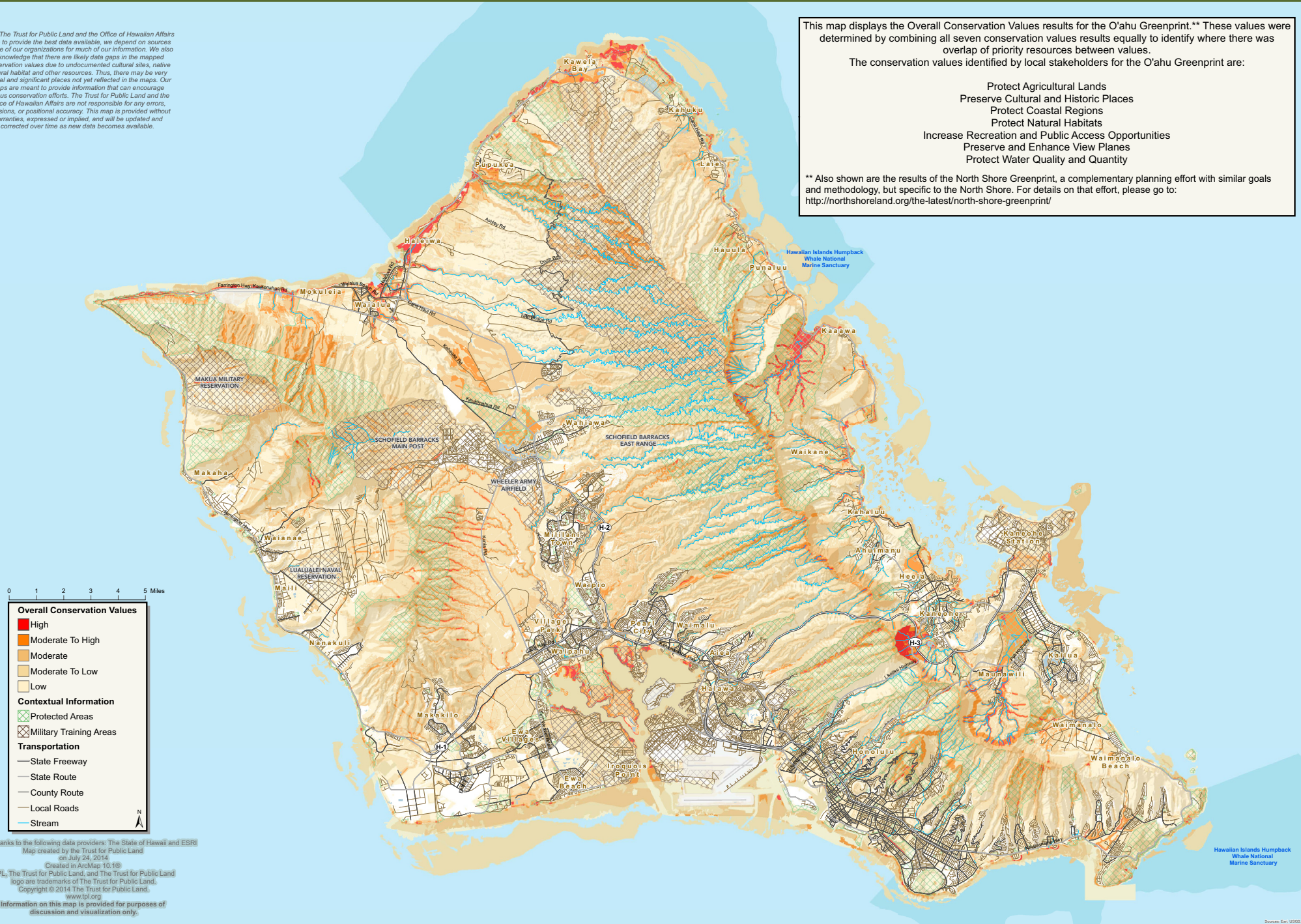
While The Trust for Public Land and the Office of Hawaiian Affairs strive to provide the best data available, we depend on sources outside of our organizations for much of our information. We also acknowledge that there are likely data gaps in the mapped conservation values due to undocumented cultural sites, native natural habitat and other resources. Thus, there may be very special and significant places not yet reflected in the maps. Our maps are meant to provide information that can encourage various conservation efforts. The Trust for Public Land and the Office of Hawaiian Affairs are not responsible for any errors, omissions, or positional accuracy. This map is provided without warranties, expressed or implied, and will be updated and corrected over time as new data becomes available.

This map displays the Overall Conservation Values results for the O'ahu Greenprint.** These values were determined by combining all seven conservation values results equally to identify where there was overlap of priority resources between values.

The conservation values identified by local stakeholders for the O'ahu Greenprint are:

- Protect Agricultural Lands
- Preserve Cultural and Historic Places
- Protect Coastal Regions
- Protect Natural Habitats
- Increase Recreation and Public Access Opportunities
- Preserve and Enhance View Planes
- Protect Water Quality and Quantity

** Also shown are the results of the North Shore Greenprint, a complementary planning effort with similar goals and methodology, but specific to the North Shore. For details on that effort, please go to: <http://northshoreland.org/the-latest/north-shore-greenprint/>



Hawai'i Statewide Conservation Planning - O'ahu Greenprint

Increase Recreation and Public Access Opportunities

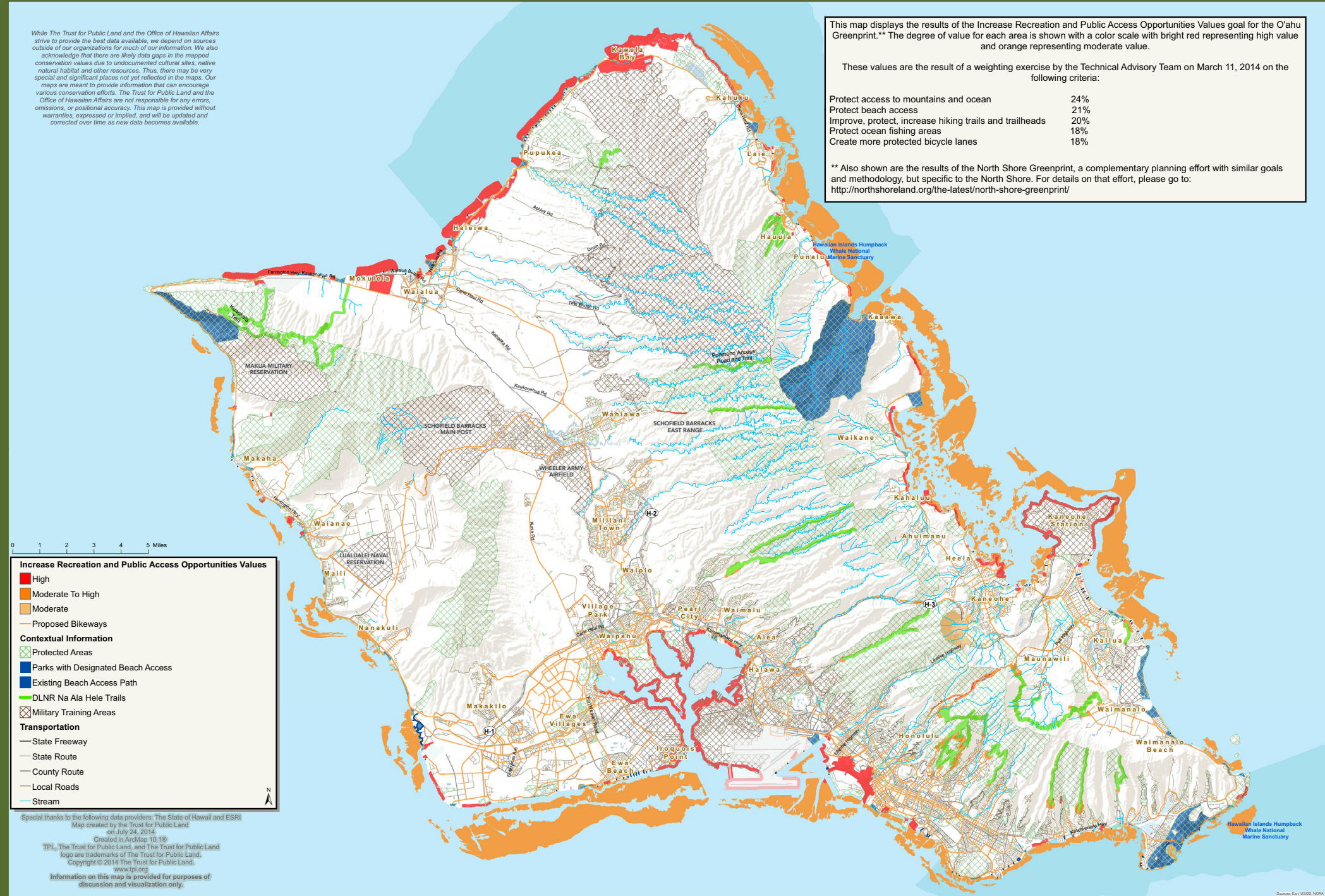
While The Trust for Public Land and the Office of Hawaiian Affairs strive to provide the best data available, we depend on sources outside of our organizations for much of our information. We also acknowledge that there are likely data gaps in the mapped conservation values due to undocumented cultural sites, native natural habitat and other resources. Thus, there may be very special and significant places not yet reflected in the maps. Our maps are meant to provide information that can encourage various conservation efforts. The Trust for Public Land and the Office of Hawaiian Affairs are not responsible for any errors, omissions, or positional accuracy. This map is provided without warranties, expressed or implied, and will be updated and corrected over time as new data becomes available.

This map displays the results of the Increase Recreation and Public Access Opportunities Values goal for the O'ahu Greenprint.** The degree of value for each area is shown with a color scale with bright red representing high value and orange representing moderate value.

These values are the result of a weighting exercise by the Technical Advisory Team on March 11, 2014 on the following criteria:

Protect access to mountains and ocean	24%
Protect beach access	21%
Improve, protect, increase hiking trails and trailheads	20%
Protect ocean fishing areas	18%
Create more protected bicycle lanes	18%

** Also shown are the results of the North Shore Greenprint, a complementary planning effort with similar goals and methodology, but specific to the North Shore. For details on that effort, please go to: <http://northshoreland.org/the-latest/north-shore-greenprint/>



Hawai'i Statewide Conservation Planning - O'ahu Greenprint

Preserve and Enhance View Planes

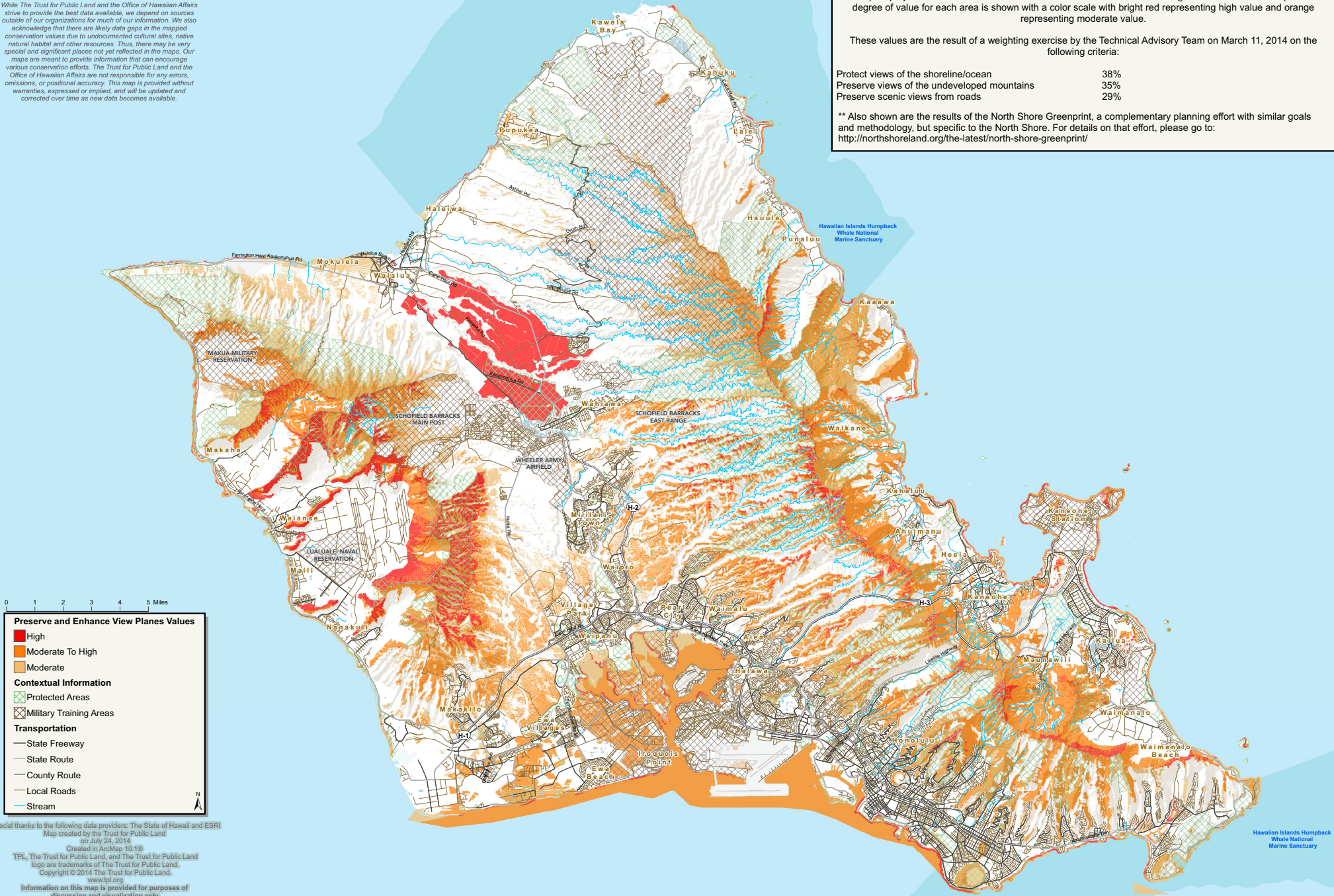
While The Trust for Public Land and the Office of Hawaiian Affairs strive to provide the best data available, we depend on sources outside of our organizations for much of our information. We also acknowledge that there are likely data gaps in the mapped conservation values due to undocumented cultural sites, native natural habitat and other resources. Thus, there may be very special and significant places not yet reflected in the maps. Our maps are meant to provide information that can encourage various conservation efforts. The Trust for Public Land and the Office of Hawaiian Affairs are not responsible for any errors, omissions, or positional accuracy. This map is provided without warranties, expressed or implied, and will be updated and corrected over time as new data becomes available.

This map displays the results of the Preserve and Enhance View Planes Values goal for the O'ahu Greenprint.** The degree of value for each area is shown with a color scale with bright red representing high value and orange representing moderate value.

These values are the result of a weighting exercise by the Technical Advisory Team on March 11, 2014 on the following criteria:

Protect views of the shoreline/ocean	38%
Preserve views of the undeveloped mountains	35%
Preserve scenic views from roads	29%

** Also shown are the results of the North Shore Greenprint, a complementary planning effort with similar goals and methodology, but specific to the North Shore. For details on that effort, please go to: <http://northshoreland.org/the-latest/north-shore-greenprint/>



Hawai'i Statewide Conservation Planning - O'ahu Greenprint

Protect Water Quality and Quantity

While The Trust for Public Land and the Office of Hawaiian Affairs strive to provide the best data available, we depend on sources outside of our organizations for much of our information. We also acknowledge that there are likely data gaps in the mapped conservation values due to undocumented cultural sites, native natural habitat and other resources. Thus, there may be very special and significant places not yet reflected in the maps. Our maps are meant to provide information that can encourage various conservation efforts. The Trust for Public Land and the Office of Hawaiian Affairs are not responsible for any errors, omissions, or positional accuracy. This map is provided without warranties, expressed or implied, and will be updated and corrected over time as new data becomes available.

This map displays the results of the Protect Water Quality and Quantity Values goal for the O'ahu Greenprint. The degree of value for each area is shown with a color scale with bright red representing high value and orange representing moderate value.

These values are the result of a weighting exercise by the Technical Advisory Team on March 11, 2014 on the following criteria:

Protect natural waterways, near shore waters, and fisheries	20%
Protect and restore entire stream corridors, including vegetation	17%
Protect and restore wetlands	17%
Protect aquifer recharge	16%
Identify areas to reforest in watersheds	12%
Preserve whole watersheds	11%

** Also shown are the results of the North Shore Greenprint, a complementary planning effort with similar goals and methodology, but specific to the North Shore. For details on that effort, please go to: <http://northshoreland.org/the-latest/north-shore-greenprint/>

