

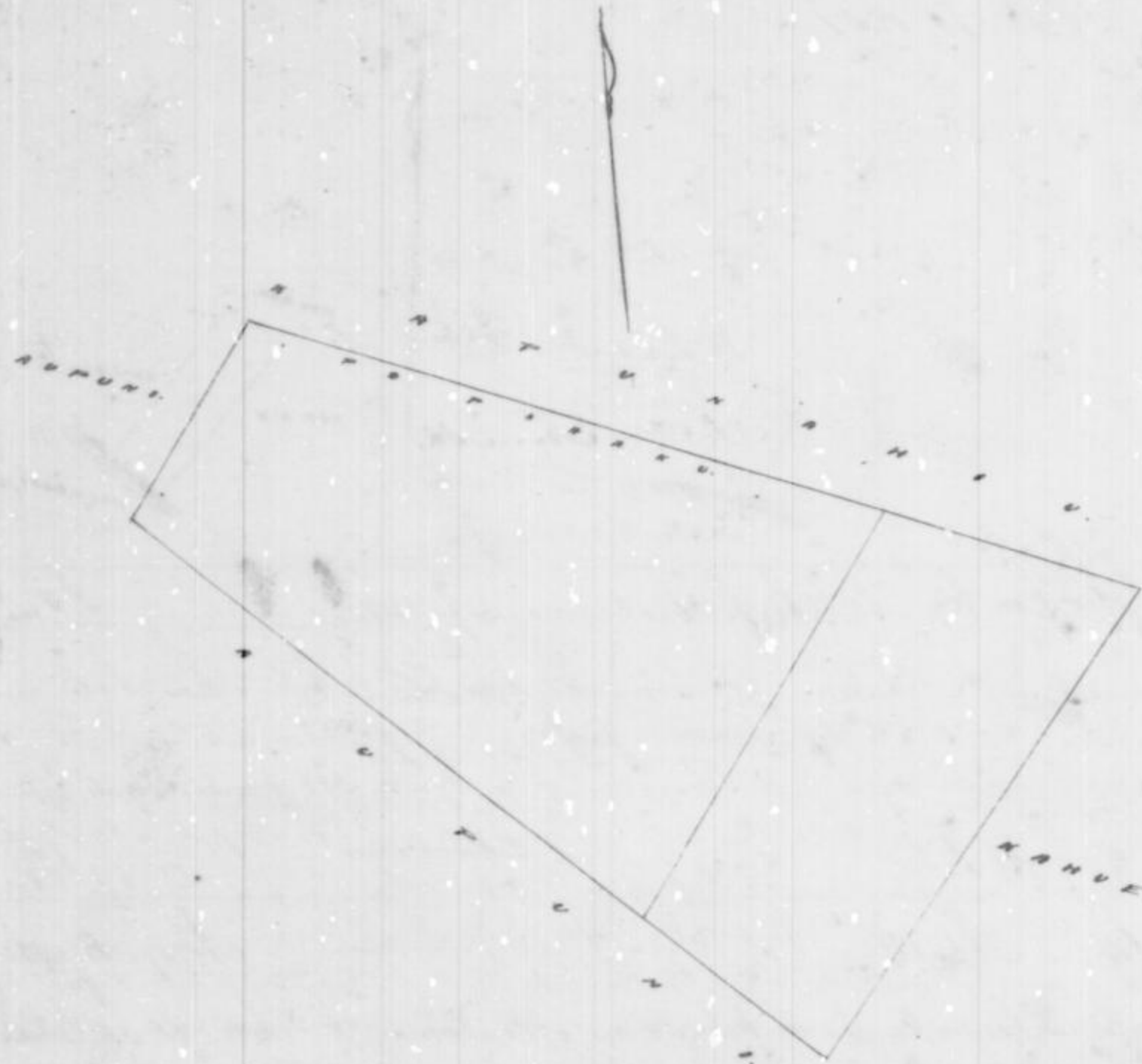
Mele 3028 Kauhū

Kauhū ma Kapumahaon, Waikiki, Oahu.

Pahale. E hoemaka ana ma ke kahi Akaun, a e holo ana Me. 36. Me 147 panta e fili ana i ka Oupuni; Me. 47. Me. 557 panta e fili ana i ka Oupuni; Me. 39. Me. 358 panta e fili ana i ka Kahue; Me. 51; Me. 553 panta e fili ana i ka papohaku a ke kahi mua

Oct. 29. 1851.

A. F. Turner
Luna ana ana



Uka faa loa

#11.

W. Lee
Loani
J. M. Smith
G. W. Robertson
J. M. Kawahoe

Honolulu, Februari, 28, 1852.

Mele 32 Kahoouluwaa

Lolo Kaula, Mele Kahoouluwaa

Ma palapala hoakaka i ke ana ma i kekahi apuna ana Kaula; Kahoouluwaa Mele 32 e waiho ana ma ke Oupuni; Lolo ma ke Kaula; Kaula, Waikiki, Oahu.

E hoemaka ana ma ke kahi Kaula Kaula, Kaula Kaula ma ke Oupuni; a e holo ana

Akaun	16	Kaula	9.77	Kaula e fili ana ma Kaula
Akaun	33	Kaula	1.11	"
Akaun	28	Kaula	17.40	"
Akaun	71	Kaula	10.06	"
Akaun	30	Kaula	27.93	"
Akaun	2	Kaula	2.13	"
Akaun	74	Kaula	12.41	"

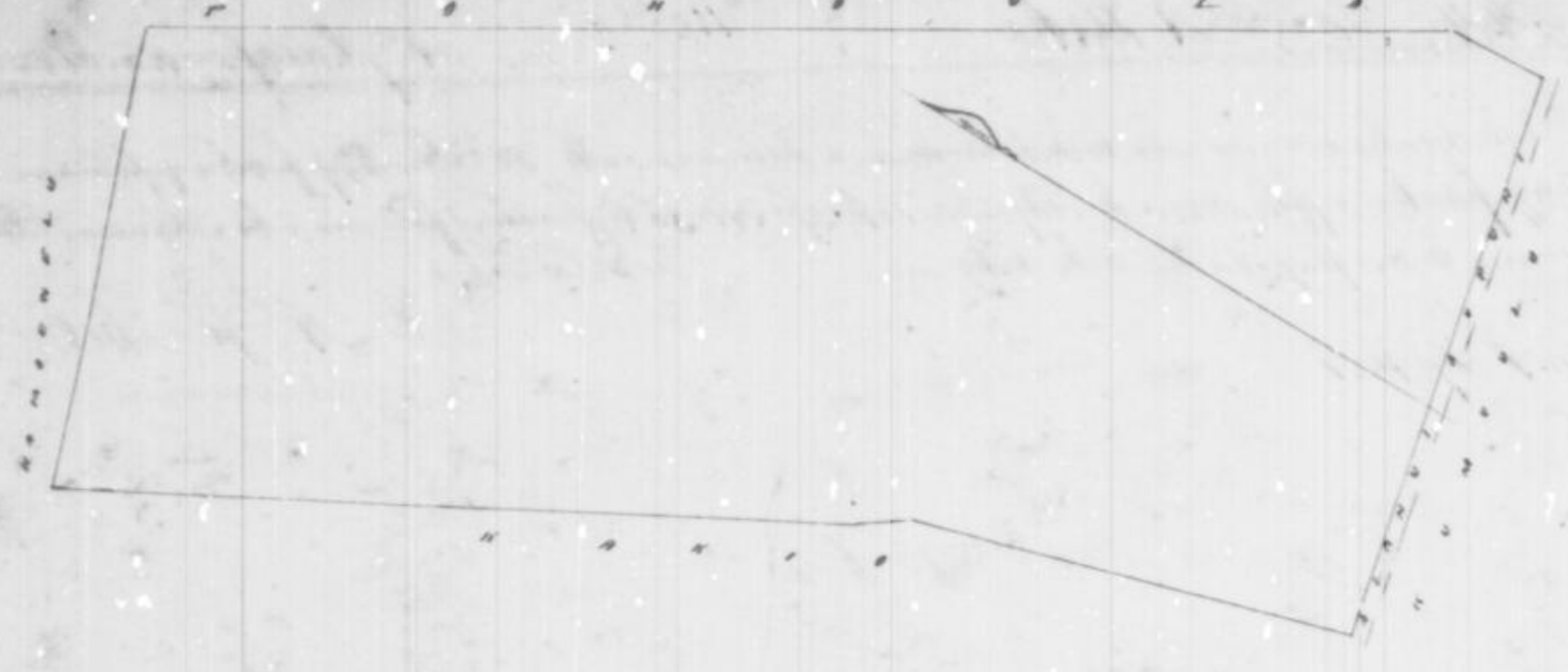
Kaula "Kaula"
"Pahala"

ma ke Oupuni e fili ana ma ke ana Kaula

a kahi i kekahi i hoemaka ai

Ma ike Kaula ma Eka

W. P. Alexander
Ma ana ana



Uku paau loa 46

W. Lee
Lomedi
J. H. Smith
J. M. Robertson
J. H. Kaulahao

Honolulu Maraki 11, 1852.

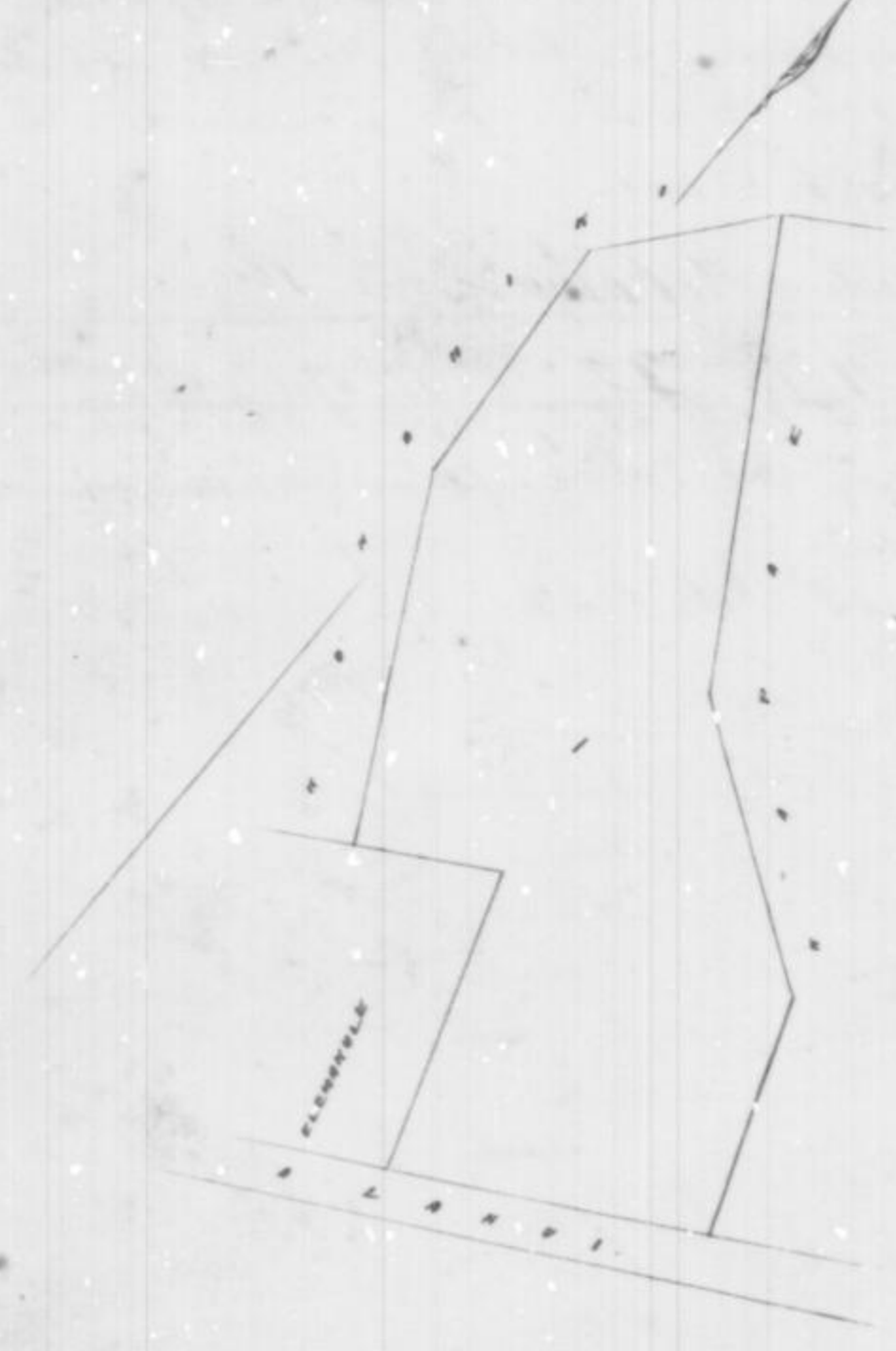
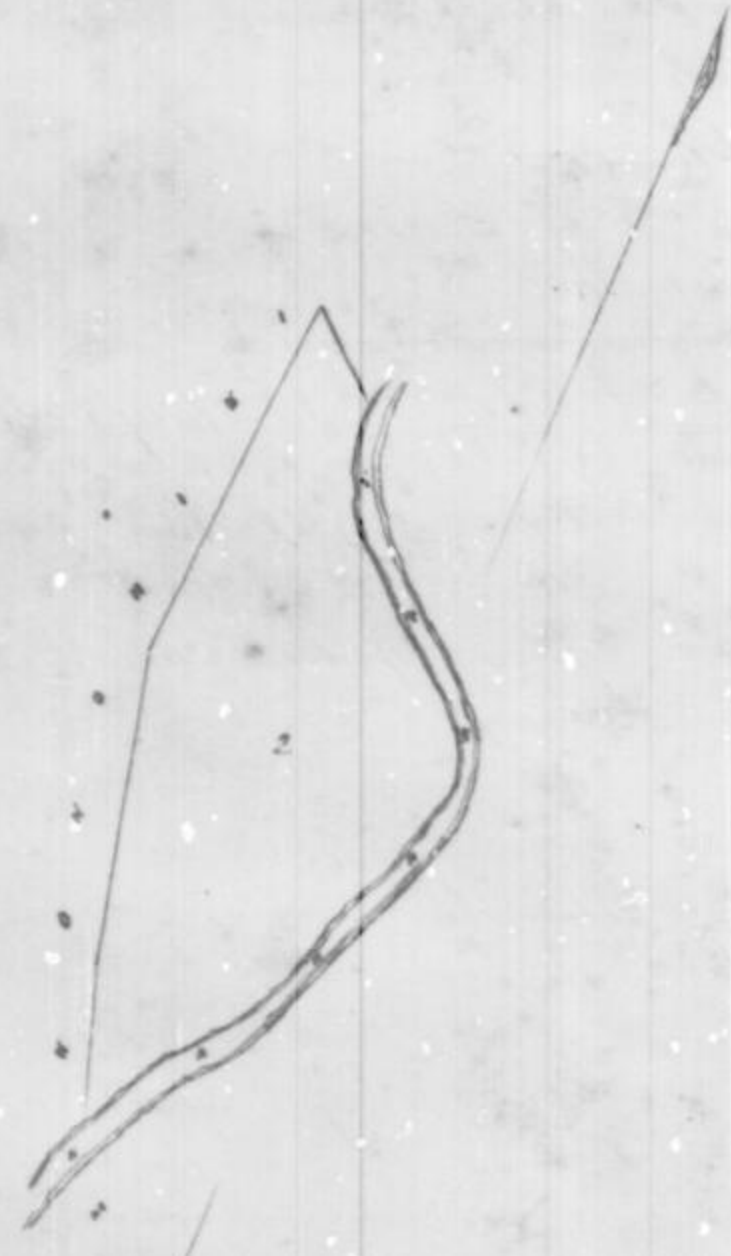
Hele 3579B Kaihepahee (no Kame) ma Ahi Heia Kod. O.

Apana 1. Moraina and Pahale. E hoemaka ana ona ke kahi o kaun, holo ana Ak. 39 Ak. 194 pouna e pili ana i ke ke Konehiki; Ak. 4 Ak. 271 pouna e pili ana i ke ke Konehiki; Ak. 28 Ak. 393 pouna e pili ana i ke ke Konehiki; 60 Ak. 150 pouna e pili i ke Elemaakule; Ak. 19 Ak. 310 pouna e pili ana i ke Elemaakule; Ak. 62 Ak. 322 pouna e pili ana i ke Aiamii; Ak. 21 Ak. 252 pouna e pili ana i ke Kapae; Ak. 57 Ak. 310 pouna e pili ana i ke Kapae; Ak. 32 Ak. 480 pouna e pili ana i ke Kapae i ke kahi mua 2, 69 Eka.

Apana 2. 7 Li. E hoemaka ana ma ke kahi Kame, a holo Ak. 19 Ak. 145 pouna e pili ana i ke ke Konehiki; Ak. 18 Ak. 300 pouna e pili ana i ke ke Konehiki; Ak. 4 Ak. 360 pouna e pili ana i ke ke Konehiki; Ak. 49 Ak. 100 pouna e pili ana i ke ke Konehiki, alaila e pili ana i ke Kahanawai a i ke kahi mua 1 2/100 Eka

1 July 1852

H. F. Turner
Luna Ana Heia



Uku paau loa 48

W. Lee
J. H. Smith
Lomedi
J. M. Robertson
J. H. Kaulahao

Honolulu Maraki 11, 1852